

Road & surface repair



Safe, sustainable and efficient mobility

A complete solution

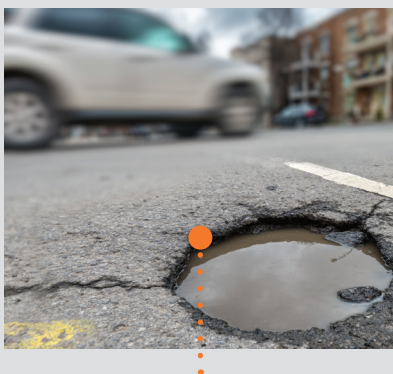
Worn and damaged roads are unfortunately not a rare sight. Potholes, cracks, and other damages on the road can be caused by a number of factors including water intrusion, heavy vehicles, as well as seasonal temperature changes.

The importance of proper maintenance

In order to keep the roads safe, it is critical to keep up with proper maintenance to prevent damage from forming or spreading further. This not only helps limit the risk of extended damages, but also the need for more extensive and costly repairs. Most importantly, however, regular repairs prolong the lifetime of the road and increase safety.

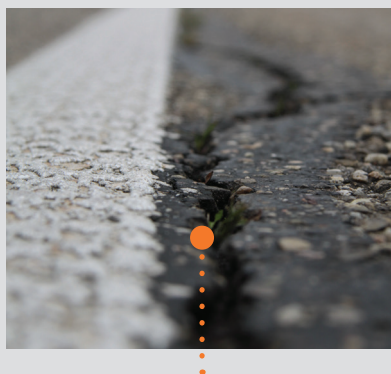
Maximise your repairs – minimise your effort

Compared to methods that demand a lot of manpower and heavy or specialised equipment our solutions are both user-friendly and cost-effective. With minimal equipment required, you reduce the risk of causing secondary damage adjacent to the repair. Furthermore, you limit the closing time of traffic during maintenance, as the repairs can be done quickly.



POTHOLE

Potholes on the road can be safety hazards and must be attended to quickly in order to avoid accidents. Depending on the size of the road damage, we recommend using our hot-applied surface defect repair ChipFill™ on its own or in combination with AggreFill™. These two specially designed products provide a fast and easy repair of the road with a minimal downtime of traffic.



JOINTS AND EDGES

Sometimes the road is in need of a helping hand. In these situations, BandFill™ provides an efficient "first aid". These light weight strips with high anti-skid properties can be used for sealing cracks in the road surface as well as the edges of repaired asphalt areas. The flexible product is available in both lines and rolls - depending on the job at hand.



CRACKS AND IRREGULAR DAMAGES

ColdFill™ is liquid road repair ideal for longitudinal cracks and levelling out larger surfaces that suffers from irregular damages. The self-levelling product ensures both quick and durable repairs that will prolong the lifetime of the surface.

A sustainable choice

Continuous maintenance helps prevent damages from forming or spreading into major repairs. In this way, you avoid having to do complete repairs of entire neglected road sections. This approach is not only the most economic solution, it is also a more sustainable one.

If the lifetime of a road is prolonged, it will save material consumption and also reduce closing time of traffic caused by major repairs. In the EU alone, a 50% reduction in major road repairs and related traffic congestion would reduce CO₂ emissions from cars by 30%.

At Geveko Markings, we know that two road damages rarely look the same. That is why our road and surface repair solution consists of a combination of products to cover almost any type of road damage before they turn into big and costly projects.

Why use our road & surface repair:

- A complete solution covering almost any type of road and surface repair.
- High-quality products providing resilient and durable repairs.
- Easy application causing no secondary damages to the road surface.
- Minimal manpower and equipment needed.
- Minimal closing time of traffic.
- Increases safety and prolongs the lifetime of the road.



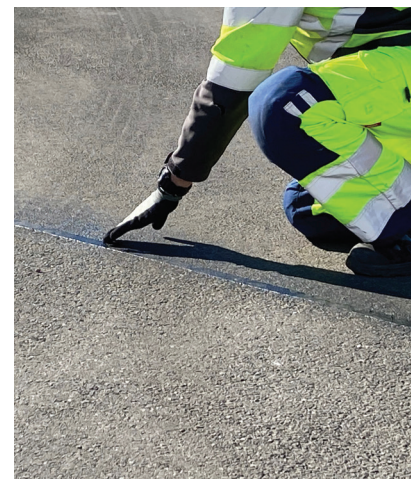
AggreFill™ & ChipFill™



ColdFill™



BandFill™



Marking the future with you



sales@gevekomarkings.com • www.geveko-markings.com